

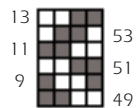
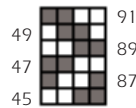
Errata

JESTER has two pattern versions; one has two charts for the leg, and the other has only one.

Part of **CHART A** or **CHART B**, depending upon your pattern, is inaccurate.

If you have **CHART B** for the lower leg, please use the following charts for rnds 8-13 and rnds 45-50.

If you have **CHART A** for the entire leg, please use the following charts for rnds 49-54 and rnds 86-91.



If your pattern has **CHART B** for the lower leg, rnd 57 should read as follows:

RND 57: p2tog, p6;
 (p2tog, p6, p2tog, p7) 4 times;
 p2tog, p6; 74 sts